

LIVING AT LA TROBE

EXPERIENCE COMFORT, CONVENIENCE AND CONNECTION

latrobe.edu.au/accommodation



LA TROBE
UNIVERSITY

UniLodge

WELCOME TO LIVING AT LA TROBE

Living at La Trobe is more than just a place to live. You'll be joining a vibrant, inclusive and safe community.

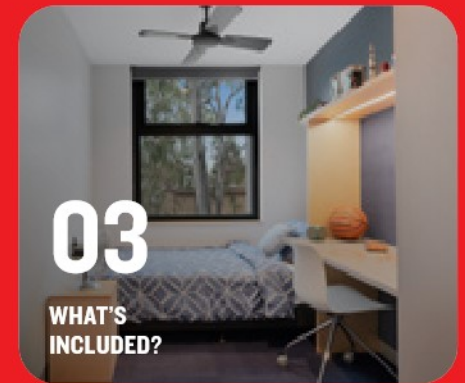
All our campuses have a variety of student accommodation options for you to explore. Our residences are close to your classes and, with fantastic amenities at your doorstep, there's no better way to experience campus life and create lifelong memories.

Discover your perfect home away from home as you begin your academic journey with La Trobe University.



Scan code to learn more:
latrobe.edu.au/accommodation

CONTENTS



RESIDENTIAL LIFE (AKA RES LIFE) AT LA TROBE IS LIKE NO OTHER

Create ever lasting memories, make lifelong friendships and experience new adventures with Res Life.

Enjoy a variety of fun and safe events throughout the year within an inclusive environment. Res Life ensures a well-rounded student experience — hosting events and programs that cover all aspects of the student lifestyle from Social to Community, Academic, Cultural and Health and Wellbeing.

Attend an Australian rules (AFL) football game, take a trip to the Great Ocean Road, ski Victoria's alpine slopes, attend fitness sessions, dance up a storm at a neon party, test your luck at Drag Queen Bingo, check in with RUOK? events, dress up for the annual Residential Ball and a whole lot more.

Res Life provides Health and Wellbeing support. We individually check in with all our residents to ensure you succeed personally, academically and socially. Our door is always open!

Our Residential Leader program offers an avenue for all our residents to grow their leadership skills. This program provides a valuable opportunity to every resident, facilitating their development of vital employability skills through comprehensive professional training sessions conducted throughout the year.



WHAT'S INCLUDED?

Furnished room



Fully secured room access with individual keycard entry



Utilities (electricity and water)



Unlimited internet



Laundry facilities



24/7 support staff



A full calendar of fun activities and events



Range of amenities*



* Amenities may include a gym, study rooms, BBQs, communal lounge rooms, game rooms and more. See the individual residence pages for details.

TOP TEN REASONS TO LIVE ON CAMPUS

1. BETTER ACADEMIC PERFORMANCE



Living on campus will help you feel more engaged with your education and more positive generally. Residents have been proven to consistently outperform non-residents!

2. EXCLUSIVE RESIDENTIAL LIFE PROGRAMS



We've got it all covered with a diverse range of cultural, social, community, academic, and health and wellbeing activities on offer throughout the year just for you! Join in on the fun!

Living on campus provides plenty of opportunities to get involved and give back to our wonderful community. You could be a student leader or apply for other leadership roles. Comprehensive training is provided, and not only does this develop key employability skills, but you'll also be helping other residents!

3. AFFORDABLE ACCOMMODATION OPTIONS



Whether you're looking for a quiet place to study or a vibrant, social atmosphere, we've got accommodation options to suit you at our Melbourne, Bendigo and Albury-Wodonga campuses.

For a social vibe, you might choose a residential college. Or maybe a self-contained unit is more your style.

4. CONVENIENT LOCATION



You'll be close to everything – When you live on campus, you're not only close to your classrooms, you'll be just a short walk away from student advising, career support, the library, student clubs, counselling services and more. Each campus also has or is located near specialty shops where you can get things like books, groceries, a coffee or lunch.

5. WELCOMING AND INCLUSIVE COMMUNITY



At Living at La Trobe, you'll join an amazing community of residents and staff from all over Australia and the world. We foster a safe, happy and healthy environment that helps you to thrive. Our residents and staff share a common goal of creating a space where everyone will feel welcome, respected and comfortable being their true self.

6. A SAFE ENVIRONMENT



We pride ourselves on keeping residents safe on, and around, our campuses. Our dedicated staff and on-campus security team are available all day, every day to support you. You'll feel safe at all times knowing there's someone to call in the event of an incident or emergency.

7. EXTENSIVE ORIENTATION AND TRANSITION



You'll make friends for life at Living at La Trobe! Participate in our exclusive week long residential orientation program before semester one begins. It features events and activities tailored to introduce you to your new residence, other students, our residential advisors, key staff and the local area.

8. SUPPORT SERVICES



Easy access to support services – Receive the support you need from our professional Health and Wellbeing team. Our services include: Wellbeing Mentors, Counselling, AccessAbility and Inclusion, Safer Community, Wellbeing Connect, Multifaith Spiritual Wellbeing, LGBTIQ+, Men's and Indigenous Programs, Legal, Financial Counselling and Food and Material Aid.

9. INTERNATIONAL STUDENT SUPPORT



We offer the best possible support for our international students! We're there for you every step of the way with advice, information and support. This includes on-boarding and enrolment support, transition to onshore study and access to the student advising team.

10. RESIDENTIAL LEADER SUPPORT



Receive support from students who have been there and done it all before. A team of friendly student leaders are available to provide support, assistance and mentoring to residents on campus.

MELBOURNE CAMPUS (BUNDOORA)

**LIVE IN A BEAUTIFUL NATIVE
BUSHLAND SETTING WITH THE
CONVENIENCE OF LIVING ON CAMPUS
IN METROPOLITAN MELBOURNE**

MELBOURNE CAMPUS (BUNDOORA)



Scan code to learn more:
[latrobe.edu.au/accommodation/
locations/melbourne](http://latrobe.edu.au/accommodation/locations/melbourne)



THE LIVING AT LA TROBE PRECINCT IS NESTLED INTO LANDSCAPED SPACES AND IS A STONE'S THROW AWAY FROM THE CENTRE OF CAMPUS. FROM RESIDENTIAL COLLEGES TO ARCHITECTURALLY DESIGNED APARTMENTS, FIND YOUR PERFECT HOME AWAY FROM HOME.

You'll be close to everything when you live on campus. From food and beverage retailers, specialty shops, a post office, and the library:

- 3 minute walk to the Agora, the centre of campus
- 16 km from Melbourne CBD
- 25 minute drive to Melbourne Airport
- 5 minute walk to tram and bus stops
- 10 minute walk to the local shopping centre

You will also have access to:

- 24 hour support staff available on site
- Ample on-site parking (parking permits required)
- Residential leaders living on-site to provide peer support
- The La Trobe Glider bus – a free bus service around the campus and local shopping centre
- Uni-Safe service – after dark, security officers are available to escort you around campus, campus car parks and local transport points such as the local train stations or tram stop
- Optional Glenn Dining resident meal program
- Discounted La Trobe Sports Centre membership
- Outdoor BBQ areas throughout the Living at La Trobe precinct

GLENN DINING HALL AND THE PETER ROWLAND GROUP

Located in the heart of Glenn College, Glenn Dining Hall offers a bright and friendly atmosphere. All meals are expertly prepared by the talented team at Peter Rowland Group (PRG), a renowned name in the Australian food industry.

Prepare to be delighted by our diverse breakfast and dinner buffet, with options for a variety of dietary requirements. Our chefs have a strong focus on providing nutritional, well balanced, fresh and delicious meals.

Take the stress out of cooking and join us at the Glenn Dining Hall.

All residents can opt into the resident meal program regardless of the college they're residing in.

PETER
ROWLAND
— EST. 1962 —



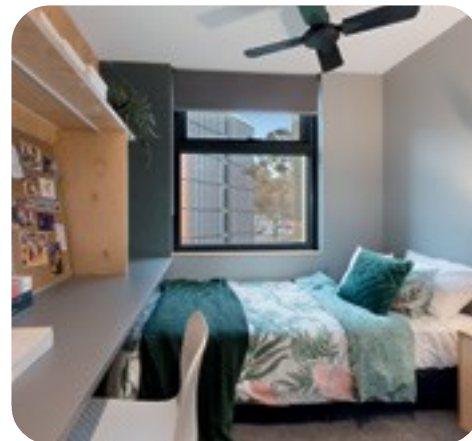
NORTH AND SOUTH APARTMENTS

Affectionately known as NASA, our newest accommodation building offers a vibrant, modern take on student housing. There's something for everyone with a range of studios and multi-bedroom apartments shared between four and six people.

Features

- Studio room
 - > Furnished with king single bed, desk, chair, wardrobe and fan
 - > Kitchenette
 - > Ensuite bathroom*
- Multi-bedroom apartments
 - > Each bedroom is furnished with a king single bed, desk, chair, wardrobe and fan
 - > Kitchen, dining, and living area
 - > Two shared bathrooms
- All residents have access to kitchens, dining areas, and common recreational spaces
 - > Study spaces
 - > Laundry facility
 - > On-site gym

* Please ask if you need a room designed for students with additional accessibility and mobility requirements.



GLENN COLLEGE

Experience the rich history of our esteemed residence, Glenn College, where a stimulating intellectual environment merges seamlessly with a vibrant social community. Fully catered, residents come together daily in the welcoming Glenn Dining Hall to share breakfast and dinner as a tight-knit community.

Features

- Fully catered breakfast and dinner, seven days a week
- All rooms have a single bed, desk, chair, wardrobe and heating
- Shared bathrooms
- Communal kitchen
- Common recreational and entertainment space
- Laundry facility
- Study spaces



MENZIES COLLEGE

Discover the vibrant and socially engaging haven of Menzies College, a true home away from home. Residents praise Menzies for its nurturing and relaxed living environment, where a robust sense of community flourishes, providing unwavering support and fostering lifelong connections.

Features

- All rooms have a single bed, desk, chair, wardrobe and heating
- Shared bathrooms
- Communal kitchen / dining area
- Common recreational and entertainment space
- Theatre
- Laundry facility
- Study spaces
- On-site gym and sauna
- E-sports gaming room



CHISHOLM COLLEGE

Chisholm College offers a unique residential experience that embraces global perspectives and fosters a diverse community of learners. Nestled within a serene and tranquil environment, Chisholm College is thoughtfully integrated into a beautifully landscaped space.

Features

- All rooms have a single bed, desk, chair, wardrobe and heating
- Shared bathrooms
- Communal kitchen and dining area
- Common recreational and entertainment space
- Theatre
- Laundry facility
- Study spaces
- On-site gym



BENDIGO CAMPUS



Scan code to learn more:
[latrobe.edu.au/accommodation/
locations/bendigo](https://latrobe.edu.au/accommodation/locations/bendigo)



LOCATED IN FLORA HILL, THE LIVING AT LA TROBE PRECINCT IS SURROUNDED BY SCENIC BUSHLAND AND OFFERS A LAID BACK LIFESTYLE. TAKE A BREATH OF FRESH AIR AND KEEP YOUR EYES PEELED FOR A KANGAROO OR TWO WHEN LIVING WITH US IN BENDIGO.

We have several residences on campus, where you can enjoy the freedom of affordable self-catered accommodation close to everything you need and access to on-site staff all day, every day:

- 3 km from Bendigo CBD
- 2.5 km from Bendigo train station
- Less than two hour drive or train ride to Melbourne
- Located next to Greater Bendigo National Park

You will also have access to:

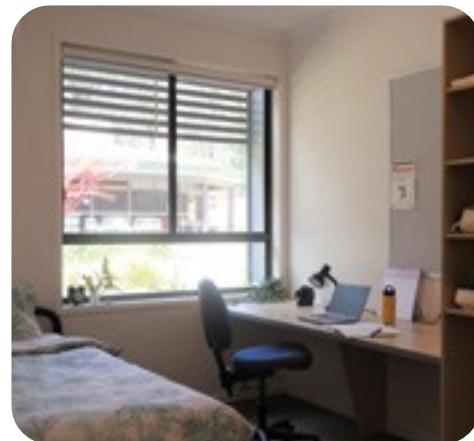
- 24 hour support staff available on site
- Ample on-site parking (parking permits required)
- Residential leaders living on-site to provide peer support
- Access to the Uni-Safe services – after dark, security officers can escort you around campus and campus car parks
- Discounted La Trobe Sports Gym membership
- Outdoor BBQ facilities

HILLSIDE APARTMENTS

Nestled just a short walk from the heart of the Bendigo campus, Hillside Apartments consist of six contemporary apartment blocks. These modern accommodations cater to the needs of Regional Health School students, with sixty dedicated bedrooms reserved exclusively for them.

Features

- All rooms have a king single bed, desk, chair, wardrobe, heating and cooling
- Shared bathrooms
- Communal kitchen and dining area
- Common recreational and entertainment space
- Laundry facilities
- Mobility accessible floors

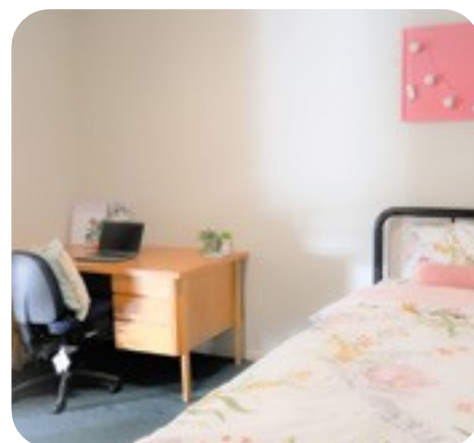


THE TERRACES

Conveniently situated a leisurely stroll away from the campus centre, The Terraces offer the added delight of picturesque bushlands. These fully furnished houses boast eight single rooms, providing comfortable accommodations for residents seeking a serene and inviting living space.

Features

- All rooms have a single bed, desk, chair and a wardrobe
- Shared bathrooms
- Communal kitchen and dining area
- Common living area
- Laundry facilities



THE UNITS

Immerse yourself in the lively spirit of The Units, where a vibrant community atmosphere thrives. It is perfectly located on campus with shared spaces, perfect for enjoying well-deserved relaxation and leisure activities.

Features

- All rooms have a single bed, desk, chair, wardrobe and heating
- Shared bathrooms
- Communal kitchen and dining area
- Common living area
- Laundry facilities
- Study spaces



THE VILLAS

Within the Robert Holmes Village on the border of campus, surrounded by peaceful bushland, Villas are offered to groups of second, third year and postgraduate students, many who spent their first years of university living at other Bendigo Campus residences.

Features

- All rooms have a single bed, desk, chair, wardrobe and heating
- Shared bathrooms
- Communal kitchen and dining area
- Common living area
- Laundry facilities



ALBURY-WODONGA CAMPUS



Scan code to learn more:
latrobe.edu.au/accommodation/locations/albury-wodonga



SITUATED NEAR THE BORDER OF VICTORIA AND NEW SOUTH WALES, THE ALBURY-WODONGA CAMPUS IS LOCATED IN A CLOSE-KNIT COMMUNITY AGAINST THE BACKDROP OF THE MURRAY RIVER.

Experience the tranquility of regional Victoria while living on campus in Albury-Wodgona, where you'll be conveniently located:

- 4 km to Wodonga town centre
- 13 minute drive to Albury Airport
- 13 minute drive to Albury town centre
- Surrounded by reserves, regional parks and national parks
- Two minute walk to bus stop

You will also have access to:

- Student leaders living on site to provide peer support
- Access to the Uni-Safe services
 - after dark, security officers are available to escort students around campus and campus car parks
- Outdoor BBQ facilities



MCFARLANE'S HILL

Our residence offers a cozy and inclusive environment with a total of 28 beds, ensuring a close-knit community atmosphere. Nestled in a picturesque location, just moments away from the centre of campus, McFarlane's Hill provides convenience and easy access to academic facilities.

Features

- All rooms have a king single bed, desk, chair, wardrobe, heating and cooling
- Shared bathrooms
- Communal kitchen and dining area
- Common living area
- Laundry facilities



REGIONAL ACCOMMODATION



BALLARAT, MELTON, MILDURA AND SHEPPARTON

Ideal for students completing placement or regional studies. Providing single rooms in local houses, each residence is fully furnished and close to local amenities.

Scan code to learn more:
latrobe.edu.au/accommodation/locations/regional

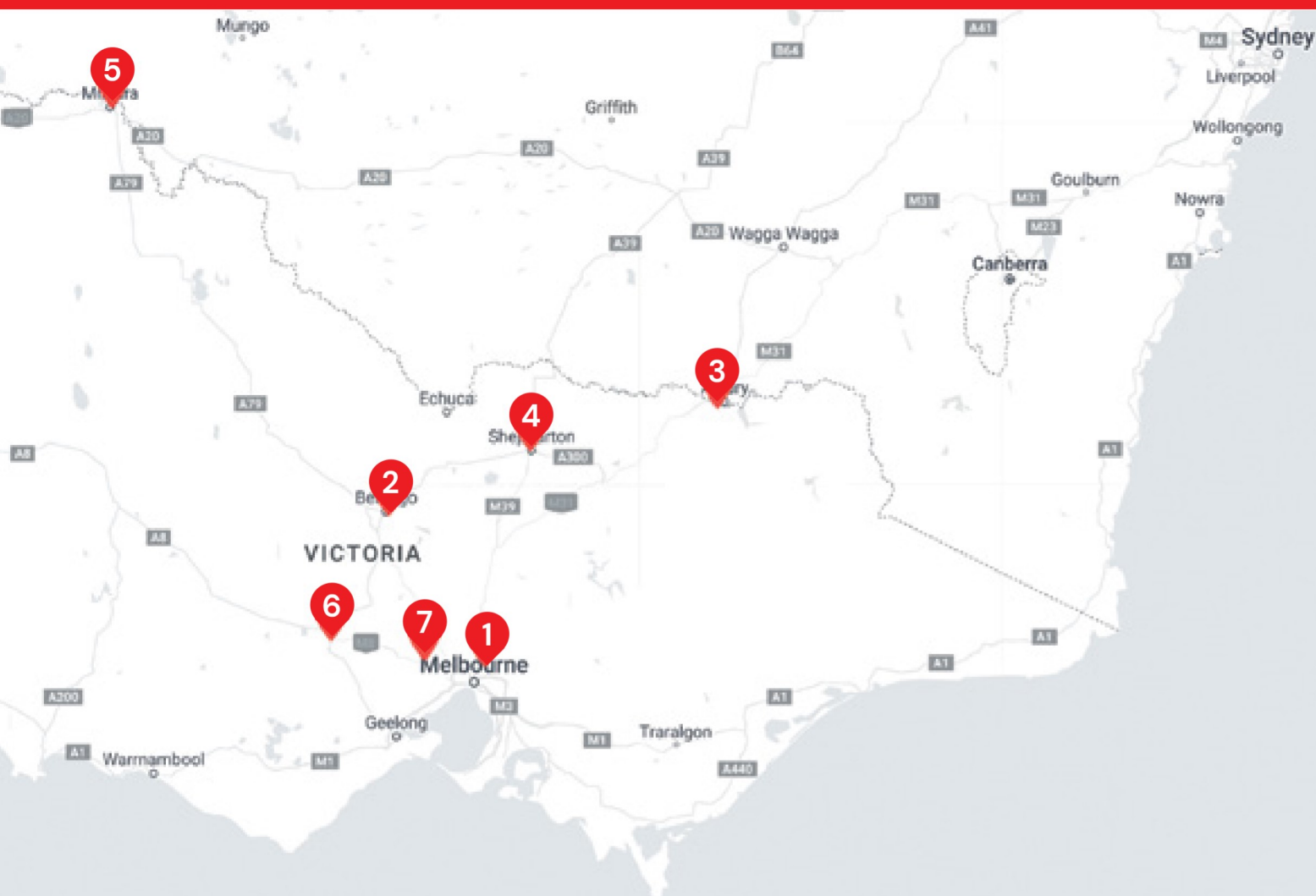
Features

- All rooms are furnished with a single bed, desk, chair, wardrobe, heating and cooling
- Shared bathrooms
- Communal kitchen and dining area
- Common living area
- Laundry facilities

ACCOMMODATION LOCATIONS



- | | | |
|-------------------------------|-------------------------|------------|
| 1 Bundoora Campus (Melbourne) | 3 Albury-Wodonga Campus | 5 Mildura |
| 2 Bendigo Campus | 4 Shepparton | 6 Ballarat |
| | | 7 Melton |



Contact us

La Trobe University
Victoria 3086 Australia

General enquiries

T +61 3 9479 1071

E living@latrobe.edu.au

w latrobe.edu.au/accommodation



Scan code to learn more:
[latrobe.edu.au/accommodation/
how-to-apply](http://latrobe.edu.au/accommodation/how-to-apply)

